



WHAT DO YOU SEE?

Look at the picture of the artwork you selected. Use this worksheet or your own paper to describe what you see in your artwork.

Does your artwork have COLOR?

There are 3 properties of color:

HUE / the name we give a color (example: orange)

INTENSITY / the richness or vividness of a color (example: neon yellow)

VALUE / how light or dark the color is

Make a list of the colors you see in your artwork. Then, describe the hue, intensity, and value of each by using adjectives or short descriptions.

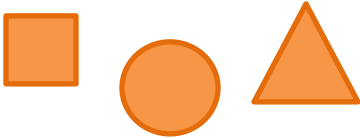
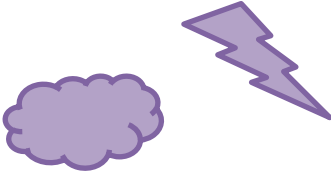
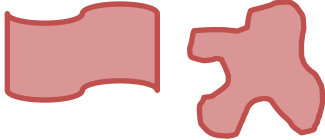
Example: green - light and bright, like the color of celery

Do you see LINES?

Lines are marks that span a distance between two points. Lines have width, direction, and length. Lines can also show characteristics like wavy, curly, or zig zag. Describe the lines that you see in your artwork.

Can you find any SHAPES?

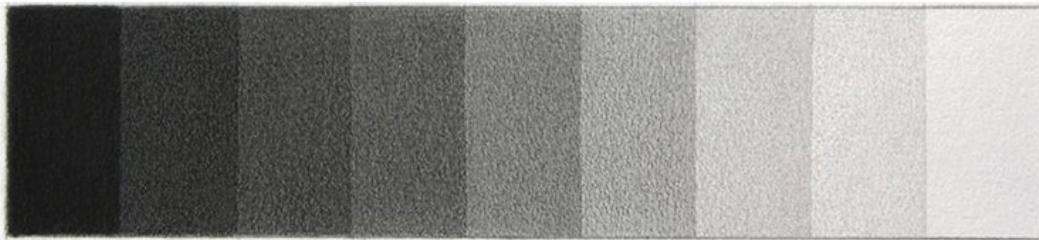
Shapes are 2D and have defined edges. There are 3 types of shapes:

<p>Geometric shapes have names like square, circle, or triangle. They are often used in math and they follow specific rules (Example: a square has 4 equal sides)</p> 	<p>Organic shapes look like objects from nature. Examples: a cloud, leaf, or flower.</p> 	<p>Free-from shapes can look like anything else. They do not follow any rules.</p> 
--	---	---

List any geometric, organic, or free-from shapes that you see in your artwork.

Can you find VALUE?

Value refers to the use of lightness and darkness in a piece of artwork. The value scale below demonstrates a range of dark to light. Write down where you see the darkest value and the lightest value in your artwork.



Does your artwork have FORM?

Form is the volume or suggested volume of your artwork. 3D artwork has form because it takes up real space. Artwork that is 2D can have the illusion of form with the use of perspective or shading techniques. Does your artwork have form or the suggestion of form?

Do you see TEXTURE?

Texture is used to describe the way an artwork feels. If you could touch your artwork, what would it feel like? Describe the texture below.

Can you find EMPHASIS?

Emphasis is where the artist makes a certain part of the artwork stand out, or catch your eye. Find the emphasis of your artwork and describe it below.

Need some help? Look at your artwork, then close your eyes. Count to 5 and reopen your eyes. Where did you look first? That is the emphasis.

Does your artwork have PATTERN?

Pattern is formed when elements are repeated, like colors, shapes, or lines. Pattern can give artwork a sense of movement or rhythm. List any patterns that you see in your artwork.

A large, empty rectangular box with a blue border, intended for listing patterns. The box is positioned below the text and occupies a significant portion of the page's width.